



Howard Morley & Sons

PER MONTH

£7,000 Per Month


Pewley Hill

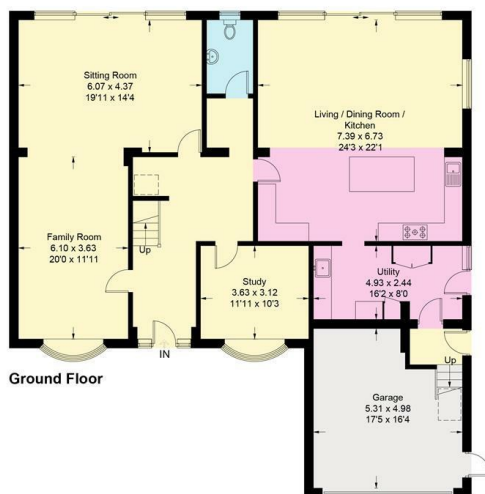
, GU1 3SW



Approximate Gross Internal Area = 323.8 sq m / 3485 sq ft (Including Garage)



 = Reduced headroom below 1.5m / 5'0"

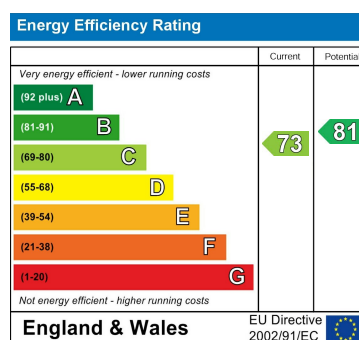


This plan is for layout guidance only. Not drawn to scale unless stated. Windows and door openings are approximate. Whilst every care is taken in the preparation of this plan, please check all dimensions, shapes and compass bearings before making decisions reliant upon them. (ID1067340)
www.bagshawandhardy.com © 2024

6
4
4







Agents Note: Whilst every care has been taken to prepare these particulars, they are for guidance purposes only. All measurements are approximate and are for general guidance purposes only and whilst every care has been taken to ensure their accuracy, they should not be relied upon and potential buyers/tenants are advised to recheck the measurements

Howard Morley
& Sons

OFFICE ADDRESS
276 High Street
Guildford
Surrey
GU1 3JL

OFFICE DETAILS
01483 575 304
lettings@hmorley.co.uk
hmorley.co.uk